

AvePoint® DocAve® for Salesforce

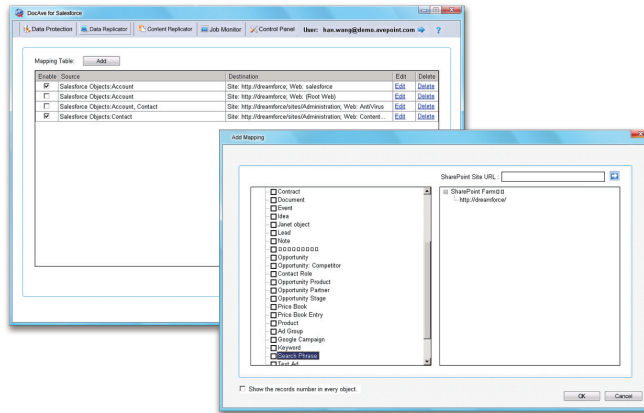
Platform

Protect
Report
Integrate

DocAve Overview

DocAve for Salesforce is the industry's most powerful solution for protecting, managing, and integrating Salesforce.com with Microsoft SharePoint Products and Technologies. With a unified platform and three independently deployable modules, AvePoint developed DocAve for Salesforce in response to the growing demand for a comprehensive backup and recovery solution for Salesforce CRM data, as well as a solution for the seamless integration and bi-directional (two way) replication of Salesforce CRM data into the Microsoft SharePoint platform.

- **DocAve Backup and Restore for Salesforce**
Powerful and nimble on-premises backup & item-level recovery for Salesforce CRM data
- **DocAve Data Replicator for Salesforce**
Seamless integration of Salesforce CRM data into Microsoft SharePoint
- **DocAve Content Replicator for Salesforce**
Automated, bi-directional, real-time integration of Microsoft SharePoint document libraries with Salesforce Content Libraries for Chatter-enabled collaboration



Business Advantages

- Ensure minimal productivity loss following accidental deletion of Salesforce CRM content. On-premise backups allow for swift, item-level, and full-fidelity content restorations directly to your Salesforce CRM environment
- Increase organization-wide transparency by incorporating Salesforce CRM data into the business processes and reporting functionality already managed via SharePoint, unifying sales and enterprise data analyses and collaboration
- Enable efficient access to the latest organization information by streamlining delivery of content authored in SharePoint out to teams via Salesforce
- Synchronize securities across platforms by leverage existing permissions and metadata schemas within Salesforce CRM and Salesforce Chatter



FREE
14-DAY TRIAL

www.AvePoint.com

*As with all AvePoint software, the DocAve Software Platform leverages only fully supported Microsoft methodologies and API's.

DocAve Backup and Restore

Full-fidelity terrestrial backup & item-level recovery for Salesforce CRM data

- Backup Salesforce CRM data to your on-premises file stores for swift, lossless recovery following accidental deletion
- Granularly restore data back to the Salesforce CRM cloud, or to any network-addressable or cloud location, ensuring zero data and productivity loss
- Flexible – full and incremental backup scheduling – enables the protection of Salesforce CRM data as business demands without overburdening storage resources
- Enterprise-strength encryption & compression ensure comprehensive “on-premise” protection of Salesforce CRM data
- Offline access to Salesforce CRM backup data enhances organizational compliance and ownership concerns by allowing users to back up data into on-premises SQL Server or Microsoft Access databases for analysis and granular recovery

DocAve Data Replicator

Seamless incorporation of Salesforce CRM data to Microsoft SharePoint

- Full replication of Salesforce CRM data to SharePoint lists
- Comprehensive metadata and user mapping ensures full fidelity replication of data between platforms
- Enables organizations to leverage SharePoint’s powerful Business Intelligence and enterprise analytics tools on Salesforce CRM data
- Bi-directional replication between Salesforce records and SharePoint lists maintains consistency by keeping data in sync
- Enhance organizational analysis, integration, and processing by keeping an on-premises copy of Salesforce records in the structured SharePoint format

DocAve Content Replicator

Automated, real-time integration of Salesforce Content Libraries with SharePoint Document Libraries

- Real-time synchronization of SharePoint Document Libraries with Salesforce Content Libraries
- Empowers organizations to publish Salesforce-stored documents via SharePoint for fully integrated, enterprise-wide information management
- Flexible version and metadata filters enable seamless assimilation of Salesforce CRM and Salesforce Chatter content into SharePoint workflows
- Full metadata and securities mapping enables full integration with Microsoft Active Directory (AD) and delivery of all AD permissions to Salesforce (as discrete metadata)
- Bi-directional replication between SharePoint Document Libraries and Salesforce Content Workspaces/Libraries keeps content (documents) synchronized between the two systems, replicating Salesforce changes on an incremental schedule, while SharePoint changes can be detected in real time or on a scheduled basis
- Link-only replication enables organizations to make SharePoint documents available in Salesforce without burdening Salesforce storage resources

Additional AvePoint Solution:

DocAve for SharePoint: The industry’s most powerful and flexible solution – with more than 25 independently deployable modules – for the protection, administration, integration, optimization, and governance of Microsoft SharePoint Products and Technologies.

Purchase directly from AvePoint:

Call: (201) 793.1111
E-mail: Sales@AvePoint.com

Evaluate DocAve for free at:
www.AvePoint.com/download

AvePoint Global
Headquarters
3 Second Street
Jersey City, NJ 07311
Phone: (201) 793.1111
Fax: (201) 217.8709

Purchase via the Salesforce AppExchange by visiting
www.sites.force.com/appexchange


the cloud-computing marketplace

About AvePoint

AvePoint is a global technology company and proven software leader. Since its founding in 2001, AvePoint has become one of the world’s largest providers of infrastructure management software solutions for SharePoint, offering a fully integrated solution for SharePoint lifecycle management. Propelled by one of the world’s largest SharePoint-exclusive research & development team, AvePoint helps more than 8,000 customers – including many Fortune 500 companies and government agencies – meet their specific business objectives by unleashing SharePoint’s full potential. AvePoint, Inc. is headquartered and maintains its principle engineering center in Jersey City, NJ, with wholly owned sales and engineering centers in the USA, Canada, Australia, United Kingdom, Germany, Japan, Singapore, and China. AvePoint is a Microsoft Gold Certified Partner and GSA provider.

For more information please visit: www.AvePoint.com

