





DOCAVE CONTENT MANAGER

FOR MICROSOFT® SHAREPOINT® CONTENT MANAGEMENT

Manage. Simplify the process of moving and migrating content within or across Microsoft SharePoint Server and SharePoint Online.

KEY BENEFITS

 <p>FULL FIDELITY MIGRATION</p>	 <p>RESTRUCTURE HYBRID ENVIRONMENTS</p>	 <p>BATCH TAXONOMY</p>	 <p>OPTIMIZED USER EXPERIENCE</p>
<p>Simply copy, move, migrate, and restructure SharePoint content within or across environments on demand or on a schedule. Maintain list, library, configurations, and metadata integrity throughout.</p>	<p>Microsoft Office 365 compatibility allows administrators to seamlessly restructure content and manage apps, workflows, and user profiles on premises as well as within cloud and hybrid environments.</p>	<p>Tag and classify SharePoint content by updating metadata in bulk for faster organization.</p>	<p>Easily respond to evolving policies and structural changes by managing enterprise content through a single, intuitive console with graphical mapping.</p>

RESTRUCTURE ENTERPRISE-WIDE SHAREPOINT ENVIRONMENTS WITH PRECISION

DocAve Content Manager provides administrators with the ability to comprehensively move, copy, and restructure SharePoint apps, content, sites, and topology within or across environments hosted on premises, in the cloud, or hybrid. Through a centralized, highly intuitive management console – featuring familiar ribbon-based controls and wizard-based, step-by-step guidance – administrators can easily manage and restructure SharePoint content with minimal interruption to business processes in order to quickly respond to evolving information governance requirements.

Microsoft Partner

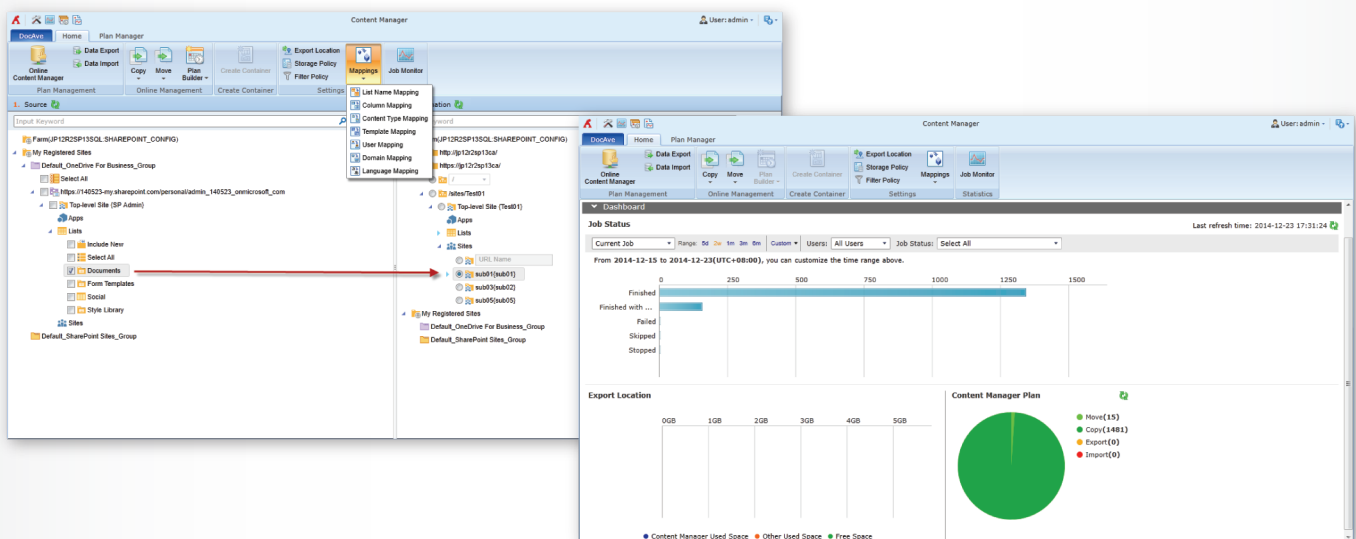
Gold Application Development
Gold Collaboration and Content
Gold Cloud Platform

FREE
30-DAY TRIAL

www.AvePoint.com

TECHNICAL OVERVIEW

- Manage SharePoint content within or across all SharePoint environments through a single, intuitive interface featuring familiar ribbon-based controls and wizards for step-by-step guidance
- Seamlessly copy and move content, apps, user profiles and workflows across SharePoint 2016, SharePoint 2013, Office 365 - SharePoint Online, and hybrid SharePoint environments
- Copy, move and restructure content to a location, server or farm with full fidelity by mapping list names, columns, content types, and templates
- Maintain list and library integrity with full support for all list types – including in-place records, document libraries, issues lists, discussion threads, and announcements – as well as content metadata and configurations
- Easily migrate content across development, staging, and production environments to reduce deployment time windows, improve IT productivity, and populate development environments with sample production content
- Simplify cross-domain migration, restructuring, and reorganization by graphically mapping domains, users, and permissions, ensuring all data and metadata is maintained
- Promote or demote sites on the fly and copy content – from list to list, library to library, or site to site – according to business requirements across multiple SharePoint environments or content databases
- Attach and merge features simplify the promotion and demotion of sites or site collections for intuitive content restructuring
- Back up the source or destination environment before performing a copy or move action, allowing you to rollback and restore the original data
- Receive detailed reports as soon as a job is complete, allowing you to check for and repair content that may have failed to copy or move



Seamlessly copy or move SharePoint content with full fidelity across your SharePoint environments and provide a comprehensive dashboard to monitor all content management and restructure jobs.

For a comprehensive list of new features in this release, please view our [DocAve 6 Service Pack 7 Release Notes](#).

How to Buy DocAve

Call: 201.793.1111
E-mail: Sales@AvePoint.com
Evaluate DocAve for free at:
www.AvePoint.com/download

AvePoint Global Headquarters
3 Second Street
Jersey City, NJ 07311
Phone: 201.793.1111 Fax: 201.217.8709



For US Government Organizations:
DocAve can be purchased directly from
AvePoint or through the GSA website at
www.GSAadvantage.gov.

See why you should choose AvePoint as a strategic SharePoint partner, visit www.avepoint.com/about.

Join the AvePoint community at www.avepoint.com/community.

Accessible content available upon request.