





DOCAVE SQL SERVER DATA MANAGER

FOR MICROSOFT® SHAREPOINT® SQL SERVER® DATA MANAGEMENT

Protect. Deliver full-fidelity, item-level restore capabilities directly from Microsoft SQL Server backups or live content databases for fast SharePoint content recovery.

KEY BENEFITS

 <p>CONTENT AVAILABILITY OPTIMIZATION</p>	 <p>COST REDUCTION</p>	 <p>BUSINESS CONTINUITY</p>	 <p>CRITICAL SLA SATISFACTION</p>
<p>Optimize content availability in the event of a disaster or network failure with fast recovery of entire SharePoint databases or granular content in-place or out-of-place, even to file shares.</p>	<p>Reduce the total cost of ownership of your content backup strategy by utilizing SQL Server's native, database-based backup with DocAve SQL Server Data Manager's full-fidelity granular recovery.</p>	<p>Minimize downtime and restore times with granular recovery of SharePoint content directly from SQL Server backups or a live database to reduce business disruption in the event of data loss or corruption.</p>	<p>Satisfy critical business demand and aggressive Service Level Agreements (SLAs) with simplified staging of existing SQL Server database backups and direct, full-fidelity restores of granular SharePoint content.</p>

FAST, ITEM-LEVEL RECOVERY SOLUTION FOR SHAREPOINT

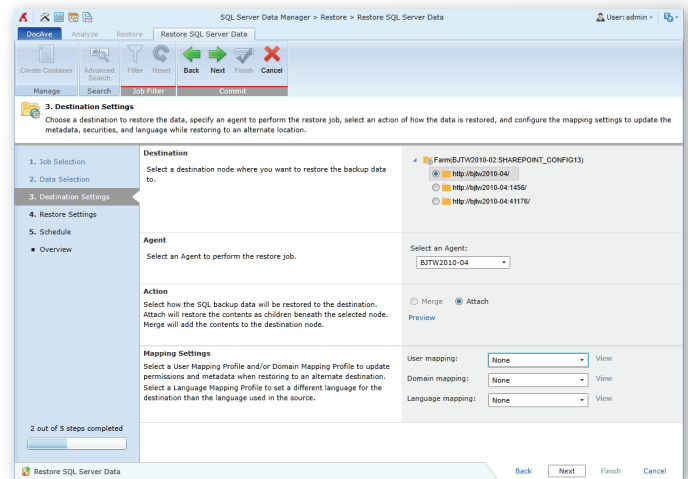
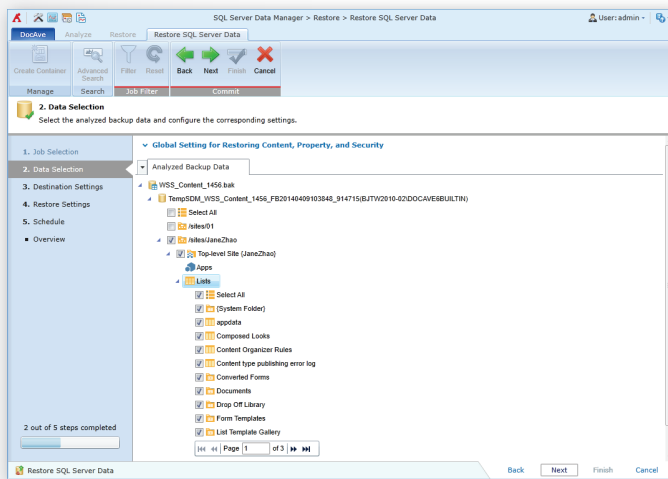
DocAve SQL Server Data Manager delivers full fidelity, item-level restore capabilities directly from SQL Server backups or a live database, ensuring fast and efficient SharePoint recovery. This component complements DocAve Backup and Restore, which delivers the comprehensive item-through-platform level protection for SharePoint that businesses demand.

Microsoft Partner
Gold Application Development
 Gold Collaboration and Content
 Gold Cloud Platform

FREE
 30-DAY TRIAL

TECHNICAL OVERVIEW

- Perform item-level restores of SharePoint content from existing SQL Server backup and VHD files or a live database with full fidelity
- Analyze SQL Server backups, transferring data to a temporary SQL Server database to enable data retrieval
- Configure a reusable staging policy to specify the SQL Server backup files and temporary database, input database access credentials, and prioritize database space allocation if temporary database thresholds are met or exceeded
- Quickly identify files for restoration with customizable filter policies based on file names or metadata
- Utilize AvePoint's InstaMount technology to enable fast recovery of individual items to production environments from a full database backup without first staging the database
- Input a specified time range to quickly identify available backup data for restoration, and view detailed backup file information such as the job status (e.g. complete, complete with exception) as well as whether InstaMount was enabled
- Granularly select SharePoint content from the site collection down to item level for restoration, including options to only restore properties or security settings of the selected content
- Restore SharePoint components including Recycle Bin data, workflows, item-dependent columns and content types, users or groups, BLOB data, apps, as well as item versions to satisfy different critical business needs
- Update permissions, metadata, or language information upon restoration with comprehensive user, domain, and language mapping
- Generate detailed job reports and send email notifications to selected users or groups
- Enable the automatic deletion of databases that are used to store analyzed SQL Server backup files to eliminate data redundancy
- Obtain a comprehensive overview of analysis or restore job statuses and counts from a specific period of time through a centralized dashboard



Configure the restore plan settings, including data selection, destination, and schedule.

For a comprehensive list of new features in this release, please view our [DocAve 6 Service Pack 7 Release Notes](#).

How to Buy DocAve

Call: 201.793.1111

E-mail: Sales@AvePoint.com

Evaluate DocAve for free at:
www.AvePoint.com/download

AvePoint Global Headquarters

3 Second Street
Jersey City, NJ 07311
Phone: 201.793.1111 Fax: 201.217.8709



For US Government Organizations:

DocAve can be purchased directly from AvePoint or through the GSA website at www.GSAadvantage.gov.

See why you should choose AvePoint as a strategic SharePoint partner, visit www.avepoint.com/about.

Join the AvePoint community at www.avepoint.com/community.

Accessible content available upon request.