



---

# **DocAve<sup>®</sup> Migrator 2.1**

Migrating from SPS 2001 to SPS 2003

---



**Copyright**

2010 AvePoint, Inc. All rights reserved. No part of this publication may be reproduced, stored in a retrieval system, or transmitted in any form or by any means, electronic, mechanical, photocopying, recording or otherwise, without the prior written consent of AvePoint, 3 Second Street, Jersey City, NJ 07311, USA

**Trademarks**

AvePoint DocAve®, AvePoint logo, and AvePoint, Inc. are trademarks of AvePoint, Inc.

Microsoft, MS-DOS, Internet Explorer, Microsoft Office SharePoint Servers 2007, SharePoint Portal Server 2003, Windows SharePoint Services, Windows SQL server, and Windows are either registered trademarks or trademarks of Microsoft Corporation.

Adobe Acrobat and Acrobat Reader are trademarks of Adobe Systems, Inc.

All other trademarks are property of their respective owners.

**Changes**

The material in this document is for information only and is subject to change without notice. While reasonable efforts have been made in the preparation of this document to assure its accuracy, AvePoint makes no representation or warranty, expressed or implied, as to its completeness, accuracy, or suitability, and assumes no liability resulting from errors or omissions in this document or from the use of the information contained herein. AvePoint reserves the right to make changes in the product design without reservation and without notification to its users.

AvePoint  
3 Second Street  
Jersey City, NJ 07311  
USA  
2010811.110240

---

**For Technical Support**, visit <http://www.avepoint.com/support>

**For Products Information**, visit <http://www.avepoint.com/products>

**For Sales Contact Information**, visit <http://www.avepoint.com/about-us/contact-us/>

## Introduction

This guide is intended for those who wish to migrate the contents of their environment from Microsoft SharePoint Portal Server (SPS) 2001 to SPS 2003. This process will require two steps: a "backup" on the SPS 2001 environment, followed by a "restore" to the SPS 2003 environment.

## Installation

DocAve™ Migrator 2.1 (or DocAve 2.1 for SP2003 WSSDL) must be installed on Microsoft SharePoint Portal Server 2001 and SharePoint Portal Server 2003 in order to migrate data from SPS 2001 to SPS 2003.

In order to install, unzip the file and run the "setup.exe" file. This installs and starts the AvePoint Control Service (ACS) on SPS 2003 automatically.

\*Note: For detailed information on installing DocAve 2 for SPS 2003, please refer to the website: <http://www.avepoint.com/support/user-guides>

## Setting AvePoint Control Service

If the SQL database is installed on the same machine as the SPS 2003 server, ACS will be set to "Local System Account" during the installation by default. No further steps are required. Please proceed to the next section.

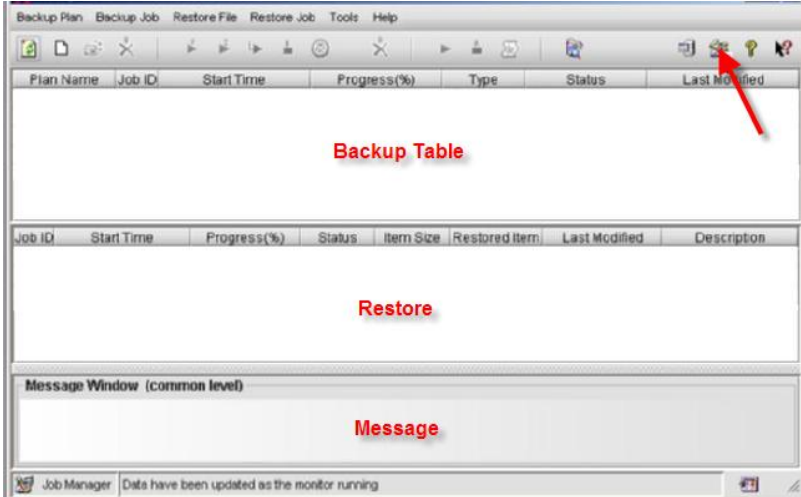
If the SQL database is located on a separate machine from the SPS 2003 installation, please perform the following steps:

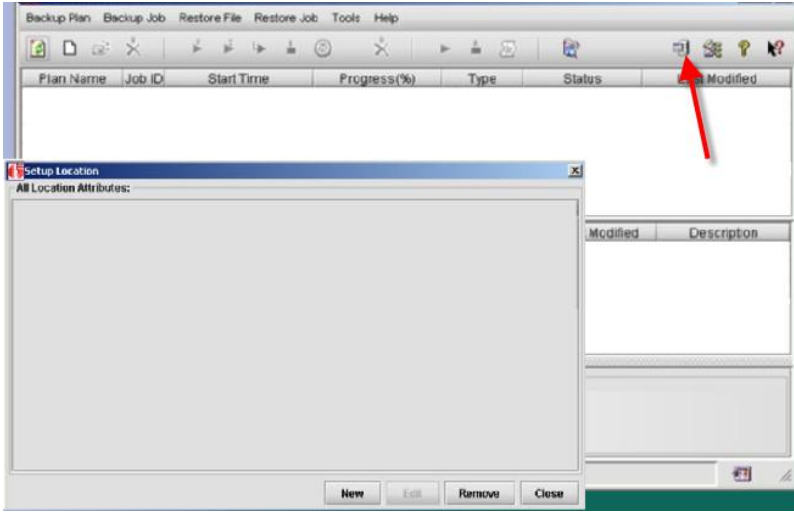
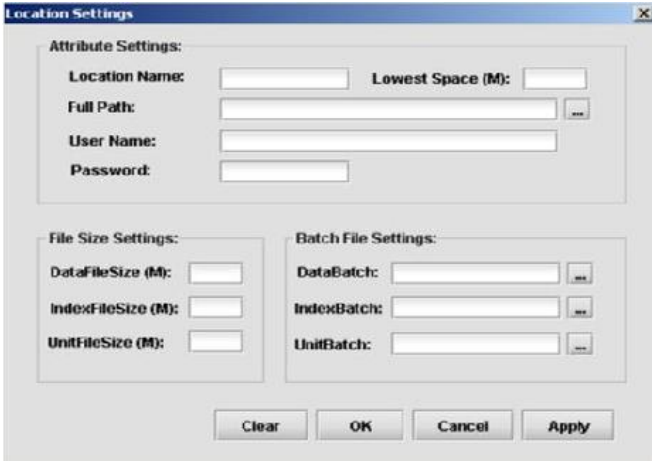
Step	Action
1	Navigate to the "Start Menu" -> "Control Panel" (or "Administrator Tool") -> "Services"
2	Look for "AvePoint Control Service" (ACS) on the list.
3	"Stop" the ACS and double click on it to bring up the property dialog.
4	Select the "LogOn" tab and check the "This Account" box.
5	In the appropriate fields, type in your account (in "Domain\user" format).  *Note: This account should have full access to the SQL database installed on the machine.

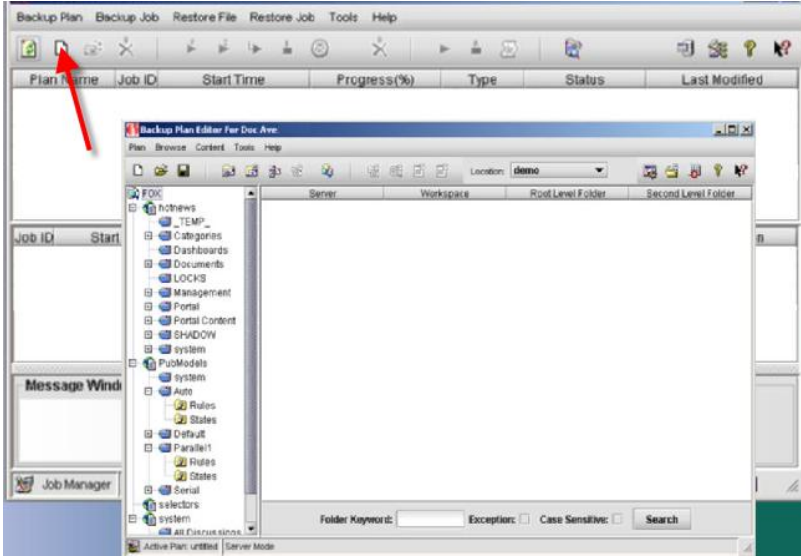
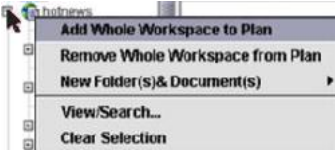

<b>6</b>	Select "OK" and start the ACS again manually.
----------	---

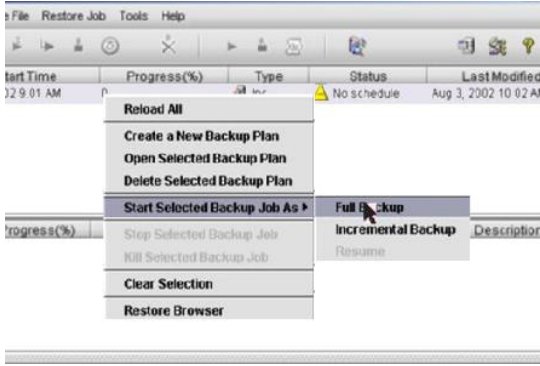
## Backup on SharePoint Portal Server 2001

The following section will show how to perform a backup of the SPS 2001 environment:

Step	Action
<b>1</b>	From the "Start Menu," run the DocAve agent.
<b>2</b>	<p>In order to create a "Backup Plan," you need to retrieve the "Folder Tree Structure" from the server. To do this, select the "Retrieve" icon shown in the screenshot:</p>  <p>A pop-up window should appear indicating that the data has been retrieved.</p>

<p><b>3</b></p>	<p>Select the "Location" icon indicated by the screenshot to bring up the location dialog:</p> 
<p><b>4</b></p>	<p>This dialog shows the attributes related to a location. To add a new location, select the "New" button on the bottom of the window. This will open a new pop-up:</p> 
<p><b>5</b></p>	<p>Enter the name for the location, and select the "..." button next to "Full Path." This will let you browse for the desired location for the backup data. Press the "Select" button after choosing a path.</p>
<p><b>6</b></p>	<p>Enter any additional information referring to that location. For advanced settings, please refer to the AvePoint website (via the link provided above).</p>

<p><b>7</b></p>	<p>After retrieving the folder structure, select the “New” icon to bring up the “Plan Editor Window”:</p>  <p>The screenshot shows the Backup Plan Manager application window. The 'New' icon (a document with a plus sign) in the toolbar is highlighted with a red arrow. Below it, the Backup Plan Editor window is open, displaying a folder tree on the left and a workspace on the right.</p>
<p><b>8</b></p>	<p>The folder structure is shown by the tree in the left side. Right click on items on the tree and add folders to the plan:</p>  <p>The screenshot shows a context menu for a folder in the tree. The menu items are: Add Whole Workspace to Plan, Remove Whole Workspace from Plan, New Folder(s) &amp; Document(s), View/Search..., and Clear Selection.</p> <p>*Note: “SHADOW” folders on SPS 2001 contain version histories. If these folders are not included, all version histories will be lost.</p>
<p><b>9</b></p>	<p>The area on the left should be populated with all the data you have added. You can select the “Location” from the top, which by default will be the path set in the previous steps.</p>
<p><b>10</b></p>	<p>Save the backup plan using the “” icon.</p>
<p><b>11</b></p>	<p>After returning to the Manager, select the “Refresh” button in the upper left corner. The new plan should be displayed in the “Backup Table.”</p>

<p><b>12</b></p>	<p>Right click on the plan and select "Start Selected Backup Job As" -&gt; "Full Backup" :</p> 
<p><b>13</b></p>	<p>After completion of the backup (shown by the progress tab), the data should be saved under the earlier specified location.</p>

**Restore on SharePoint Portal Server 2003**

If you are currently using a different username and password than the SPS 2001 server, you may have difficulty accessing the backup directory. Network locations require that the user has full administrative rights to the drive where the data is stored.

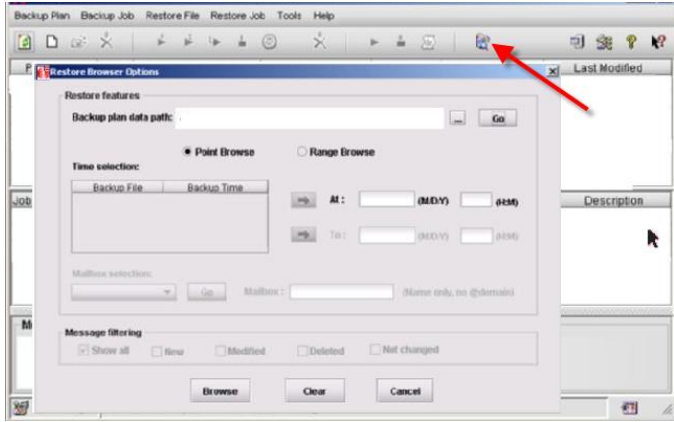
\*Note: For the first time using DocAve Migrator 2.1, please re-register the DLL. Proceed to the installation directory ("\\Program Files\\" by default), and navigate to:

"\\AvePoint\\Doc\_Ave\_for\_SharePoint\\bin"

Double click "runASPSV2TOOL.bat" to re-register the DLL file.

Step	Action
<p><b>1</b></p>	<p>On the SPS 2003 environment, create document libraries with the same names as the workspace on the SPS 2001 environment. For example, if there is a workspace on your SharePoint 2001 server with the url: "http://server2001/testname," create a document library in SharePoint 2003 with the url: "http://server2003/testname." The two servers can have the same or different names.</p>
<p><b>2</b></p>	<p>If any profiles were created by the user on the SPS 2001 server, you must recreate them with the same names and attributes on SPS 2003.</p>
<p><b>3</b></p>	<p>Go to the location specified in the SPS 2001 backup and copy the entire directory to SPS 2003.</p>

**4** Open the Migrator 2.1 Manager. Select the "Browse Option" icon to open the following popup:

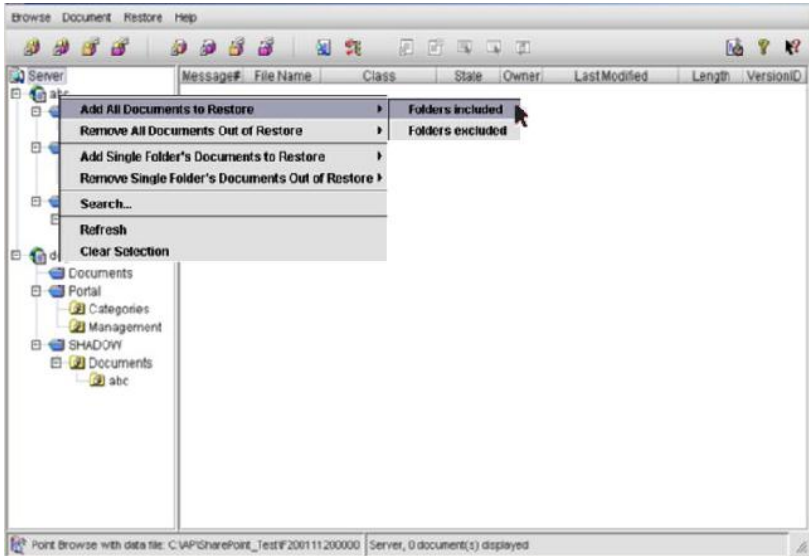


**5** Either enter the path of the SPS 2001 backup data, or browse for it using the "..." button. Select "Go" to retrieve all backup data.

**6** Select the backup file and press the "➡" button to add it to the time fields.

**7** Press the "Browse" button to open the "Restore Browser."

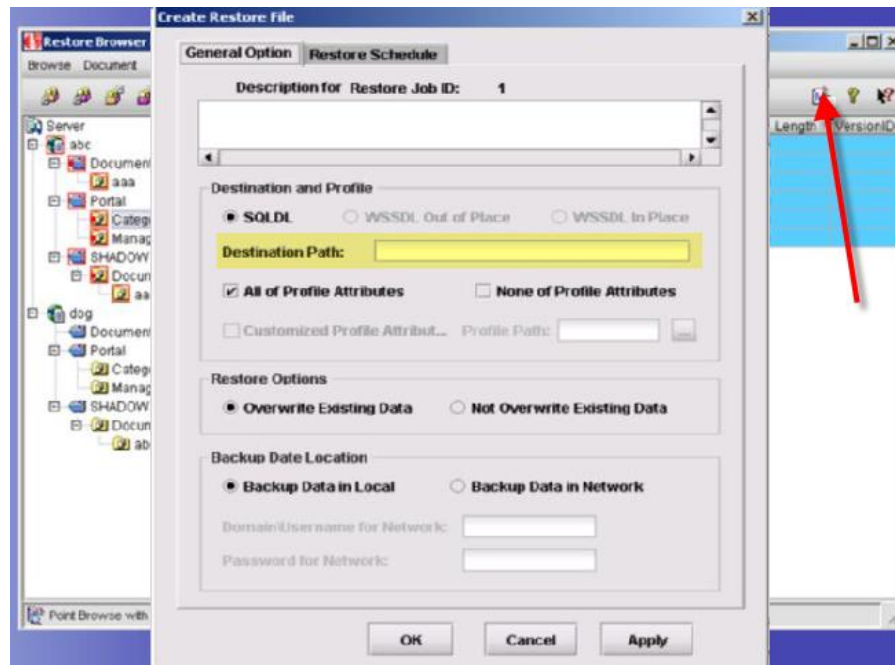
**8** Using the browser, select the items for the restore by right clicking on each item or folder. After adding the data, the items should be highlighted blue, with a box around each icon in the tree.



\*Note: Select all "SHADOW" folders to ensure that version histories are restored! Also, if you are running a Demo version of Migrator 2.1, please do not select more than 200 items at a time for restore.

Select the destination path for creating a restore file. This should be the same path as created in Step 1:

9



\*Note: If you copy and paste the link directly from SharePoint, remember to replace all "%20" phrases with a blank space in the "Destination Path" field. Also, remove all "/Forms/AllItems.aspx" references.

10

After returning to the Manager, select the "Refresh" button in the upper left corner. The new plan should be displayed in the "Restore Table."

11

The plan should execute immediately.

Congratulations, you have now successfully migrated your data from SPS 2001 to SPS 2003!