

# Deployment Manager

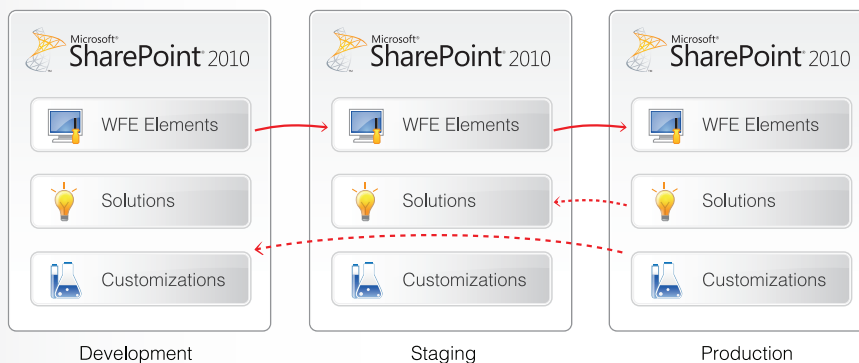


Migrate. Integrate. **Manage**. Optimize. Protect. Report.

**Manage.** Automate Microsoft® SharePoint® 2010 implementation from staging to production.

## Key Benefits

- Lower operational costs and improve IT efficiency with automated change management, allowing skilled resources to focus on higher-value activities.
- Ensure consistency across all pre-production environments and production systems by enabling complex system propagation throughout the staging environment.
- Improve service levels by standardizing SharePoint and implementation processes- empowering IT to improve its quality of service and responsiveness.
- Reduce risk and liability by eliminating manual change management, resulting in faster deployment, minimized errors, and reduced possibility of breakage.



**Propagate front-end Web configurations, design elements, and solutions across SharePoint environments for comprehensive application lifecycle management.**

## Managing and Automating Change Management for SharePoint 2010

Effectively managing and automating change management is crucial for successfully deploying Microsoft® SharePoint®. Lack of appropriate planning or control as well as errors and changes during the staging process will result in increased time-to-value, project delays, and poor application reliability. DocAve Deployment Manager for SharePoint 2010 satisfies this business-critical demand by minimizing human error and cost overruns, accelerating service delivery, and facilitating pre-production operations for successful SharePoint implementations.

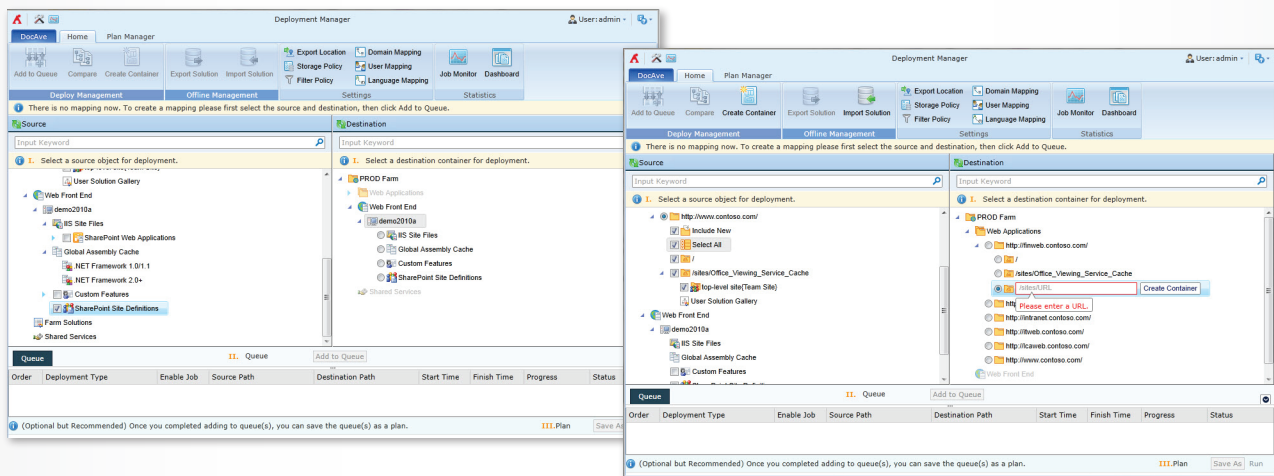


**Microsoft Partner**  
Gold Portals and Collaboration  
Gold Independent Software Vendor (ISV)

**FREE**  
30-DAY TRIAL

## Technical Overview

- Deploy and manage design elements, front-end web configurations, customizations, solutions, and features within or across SharePoint farms
- Plan-based deployment, including customizable scheduling options ensure minimal business disruptions result from design and customization element deployment
- Report on deployment tasks to track changes and notify stakeholders upon completion
- Compare site-level configurations in order to quickly identify elements for propagation and easily execute propagation tasks
- Comprehensive support for deploying site columns, content types, list/site templates, master pages, Web Part Gallery, and more
- Replicate and deploy dependencies located on the front-end Web server file system, custom .NET assemblies required for SharePoint customizations, as well as IIS settings from one environment to multiple destinations
- Copy, deploy, retract, and delete SharePoint solutions across multiple farms from a single interface



Through an intuitive interface, featuring ribbon-based controls and wizards for enhanced guidance, easily identify elements for propagation and roll-out changes based on environment comparisons.

As with all DocAve products, DocAve Deployment Manager leverages only fully supported Microsoft methodologies and APIs.

## Next Steps

### How to Buy DocAve

Call: 201.793.1111  
E-mail: Sales@AvePoint.com

Evaluate DocAve for free at:  
[www.AvePoint.com/download](http://www.AvePoint.com/download)

### AvePoint Global Headquarters

3 Second Street  
Jersey City, NJ 07311  
Phone: 201.793.1111 Fax: 201.217.8709



For US Government Organizations:  
DocAve can be purchased directly from  
AvePoint or through the GSA website at  
[www.GSAadvantage.gov](http://www.GSAadvantage.gov).

See why you should choose AvePoint as a strategic SharePoint partner, visit [www.avepoint.com/about](http://www.avepoint.com/about).

Join the AvePoint community at [www.docave.com](http://www.docave.com).