

Backup and Restore

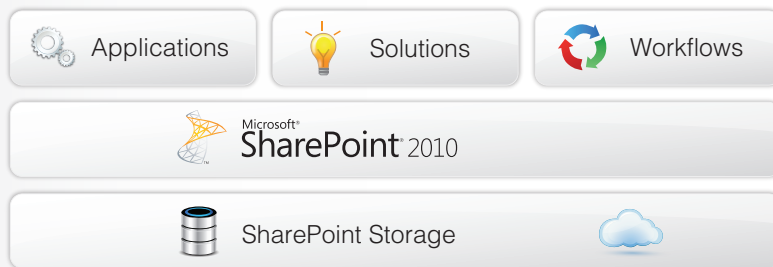


Migrate. Integrate. Manage. Optimize. **Protect.** Report.

Protect. Business-aware, comprehensive, SLA-driven protection of Microsoft® SharePoint® 2010 environments.

Key Benefits

- Protect your organization from disasters with truly comprehensive backup for your entire SharePoint environment, including all content, customizations, solutions, and features
- Minimize business disruptions caused by service interruptions or accidental deletions with efficient recovery all SharePoint components, databases, indexes, and configurations
- Satisfy even the most aggressive SLAs by minimizing downtime, data loss, and restore times with granular restore of select SharePoint components
- Track, manage, and report on all backup and restore processes through a centralized management console to monitor and enforce compliance with SharePoint protection policies



Protect all critical SharePoint assets – no matter where they reside in your environment.

DocAve Data Protection Scope

Fast, Flexible, and Intelligent Backup and Restore for SharePoint 2010

DocAve Backup and Restore for SharePoint 2010 provides full-fidelity backup and recovery, protecting individual content items to entire SharePoint environments and all farm-level components, maintaining all metadata, security settings, and version histories. Featuring a highly intuitive user interface, enterprise-strength scalability, and deep integration with leading hardware providers, DocAve Backup and Restore helps to simplify truly comprehensive SharePoint protection.

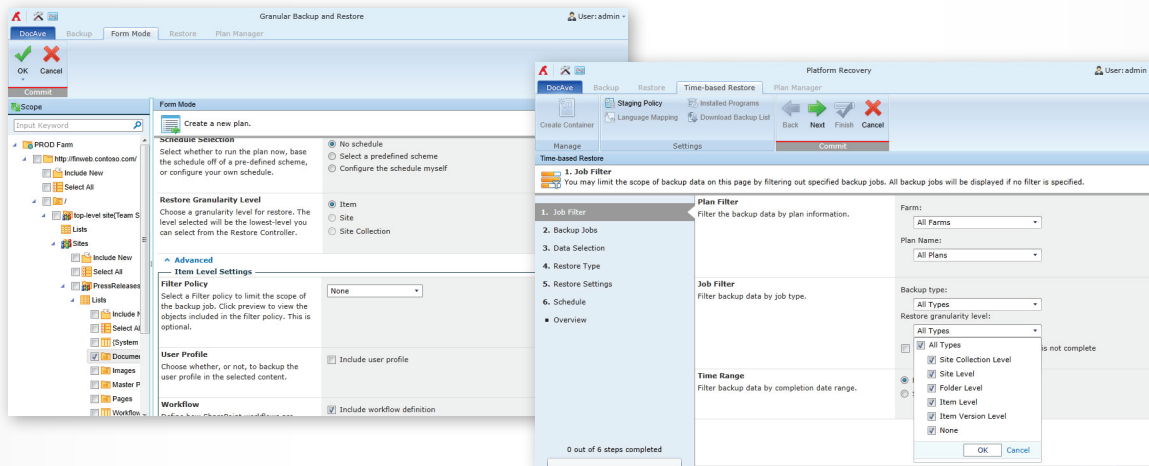


Microsoft Partner
Gold Portals and Collaboration
Gold Independent Software Vendor (ISV)

FREE
30-DAY TRIAL

Technical Overview

- Backup and recover entire SharePoint farms, or selective components, including back-end SQL databases, all configurations, Index/Job servers, front-end IIS settings, file system resources, and custom application databases
- Full-fidelity backup and restore of all SharePoint content – including sites, lists, libraries, workflow definition and instance, configurations, access permissions, metadata, and version histories
- Full, incremental, and differential backup capabilities for selective SharePoint farm components enable backup plans and schedules to focus on frequent backup of high-priority data, improving backup operations and storage efficiency
- Rapid restore of SharePoint content with AvePoint's InstaMount™ technology, enabling fast recovery of granular content from a full database backup without first staging the database
- Leverage DocAve's centralized browser-based interface to support and integrate all your SharePoint environments, supporting true multi-farm protection
- Simplify backup and restore planning with "point & click" content selection and wizards for step-by-step guidance
- Backup to centrally managed tiered storage, leveraging built-in encryption, compression, and pruning policies
- Backup to storage platforms including NetApp, EMC Centera and Dell DX Object Storage to take advantage of advanced features like de-duplication and self-healing



Configure plan settings for ad-hoc backups, including storage location, data compression, encryption, filter policy, workflows, and notification type.

As with all DocAve products, DocAve Backup and Restore leverages only fully supported Microsoft methodologies and APIs.

Next Steps

How to Buy DocAve

Call: 201.793.1111
E-mail: Sales@AvePoint.com

Evaluate DocAve for free at:
www.AvePoint.com/download

AvePoint Global Headquarters

3 Second Street
Jersey City, NJ 07311
Phone: 201.793.1111 Fax: 201.217.8709



For US Government Organizations:
DocAve can be purchased directly from AvePoint or through the GSA website at www.GSAadvantage.gov.

See why you should choose AvePoint as a strategic SharePoint partner, visit www.avepoint.com/about.

Join the AvePoint community at www.docave.com.